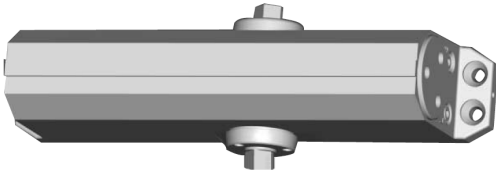


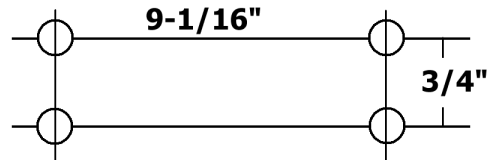
## How to find your CORBIN RUSSWIN model number

When replacing an existing closer, measure the bolt hole alignment.

DO: Measure bolt holes  
DON'T: Use markings on closer body



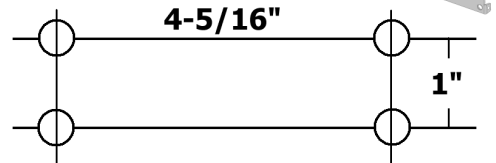
### Corbin Russwin DC4602 - 4605



Note: same as Norton's 1601



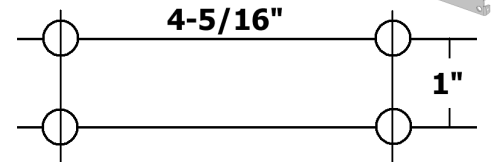
### Corbin Russwin DC3210



Holes are for Quick-Mount bracket



### Corbin Russwin DC6210



Holes are for Quick-Mount bracket

Models DC3210 and DC6210 use the same Quick-Mount bracket. The two models also look identical from the outside.

DC3210 is for low to medium use doors.  
DC6210 is for high traffic doors.

Many people mix and match these models within the same building.